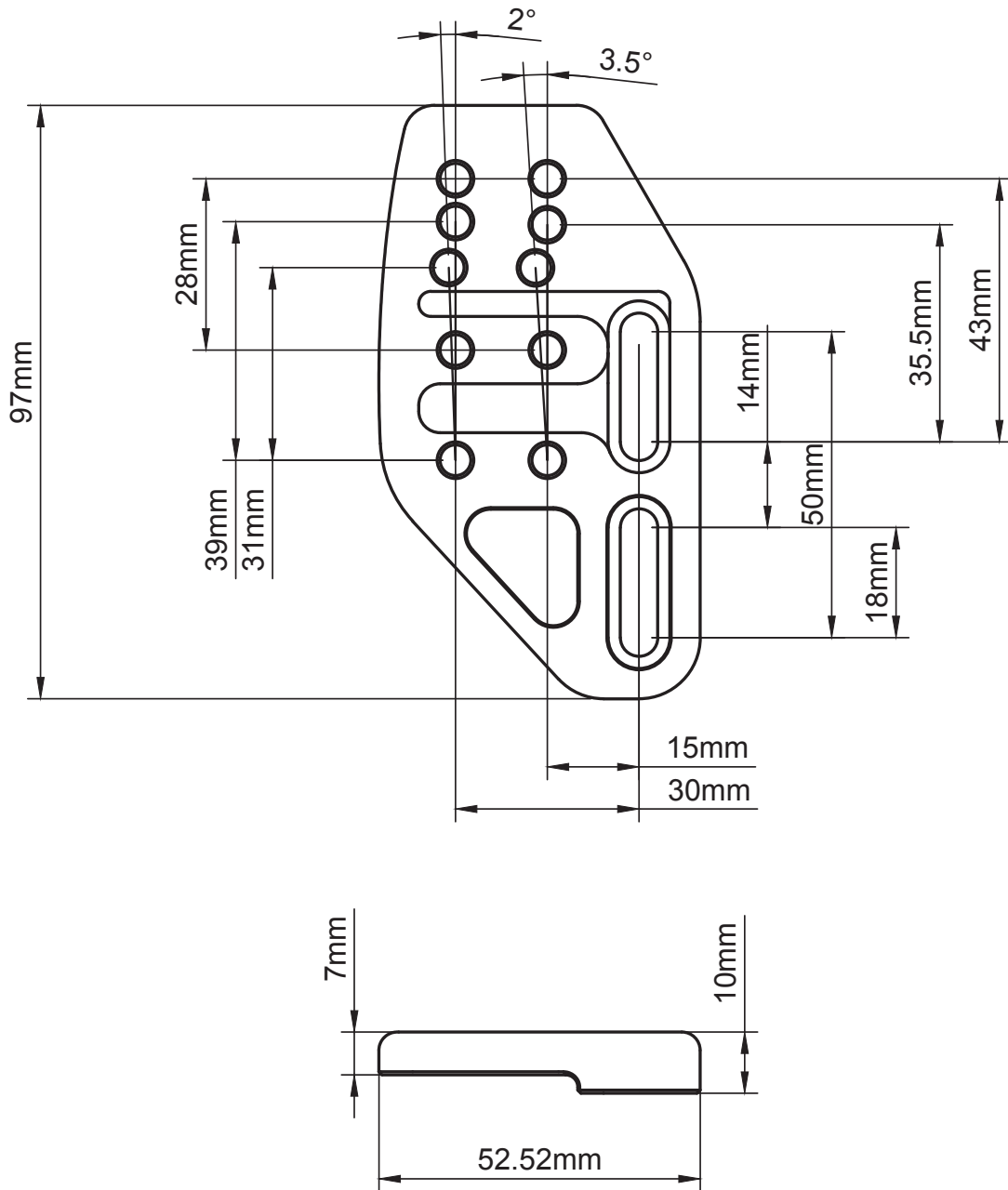




Reach Adjustment plates

Drag2Zero Reach Adjustment plates provide 15mm or 30mm of width adjustment on each side and can provide up to 43mm of additional reach for Gen2-angled shims and 44.5mm with Gen1-angled shims from the reach mounting bolts of your basebar podiums.



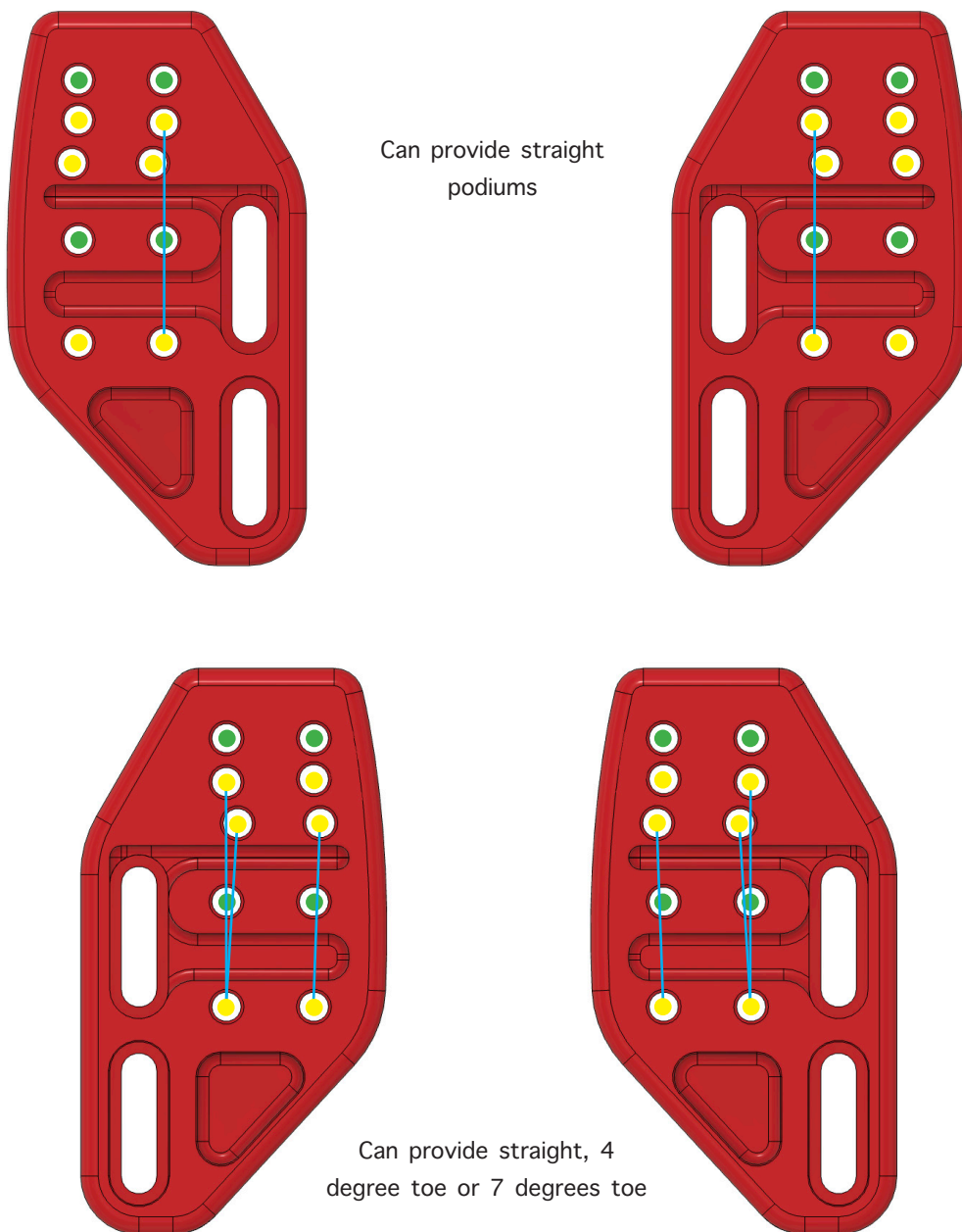


Gen1 components

Gen1 angled shims use fixing holes marked **yellow**. The plate can be used to gain a wider or a narrower setup. Note: When used to widen the basebar podium width, you will only be able to use Gen1 angled shims straight.

Gen2 components

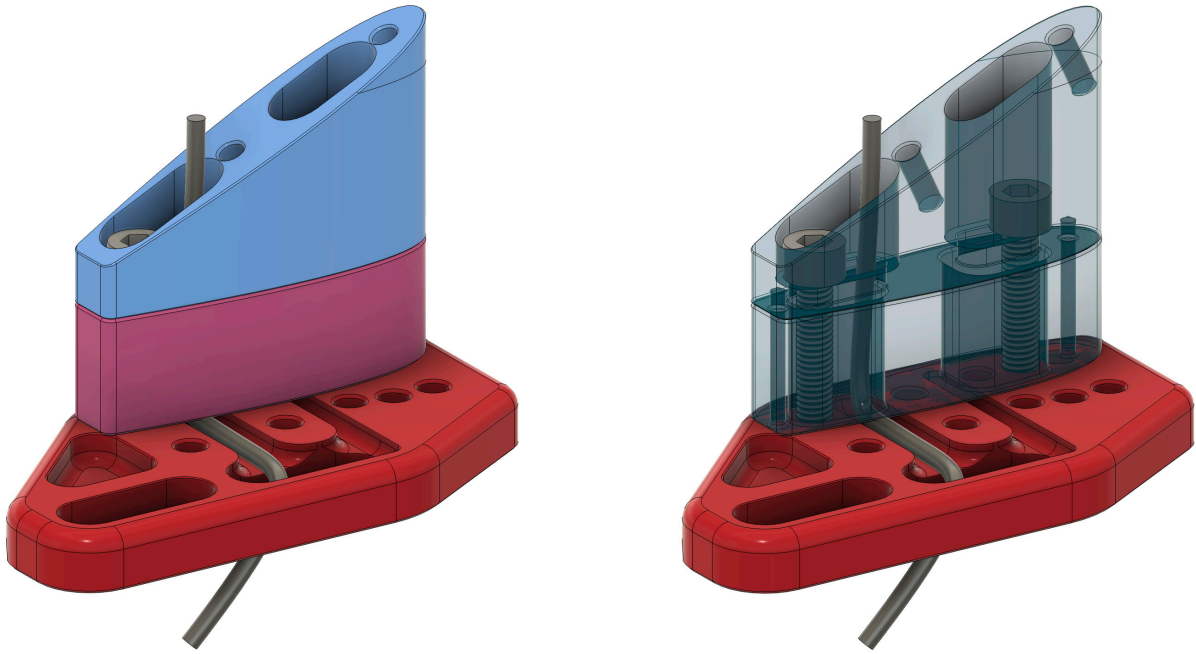
Gen2 angled shims are always run straight and use fixing holes marked **Green**. Toe is achieved through the Gen2 pole clamp.





Cable routing for Gen1 components

Electronic cables are routed through the back slot in the angled shim and the back slot in the reach plate as seen below. Be careful when bolting angled shims down to ensure cables do not get trapped.



Cable routing for Gen2 components

Electronic cables are routed through the pole clamp side groove, the centre hole in the angled shim, and the front slot in the reach plate as seen below. Be careful when bolting angled shims down to ensure cables do not get trapped.

