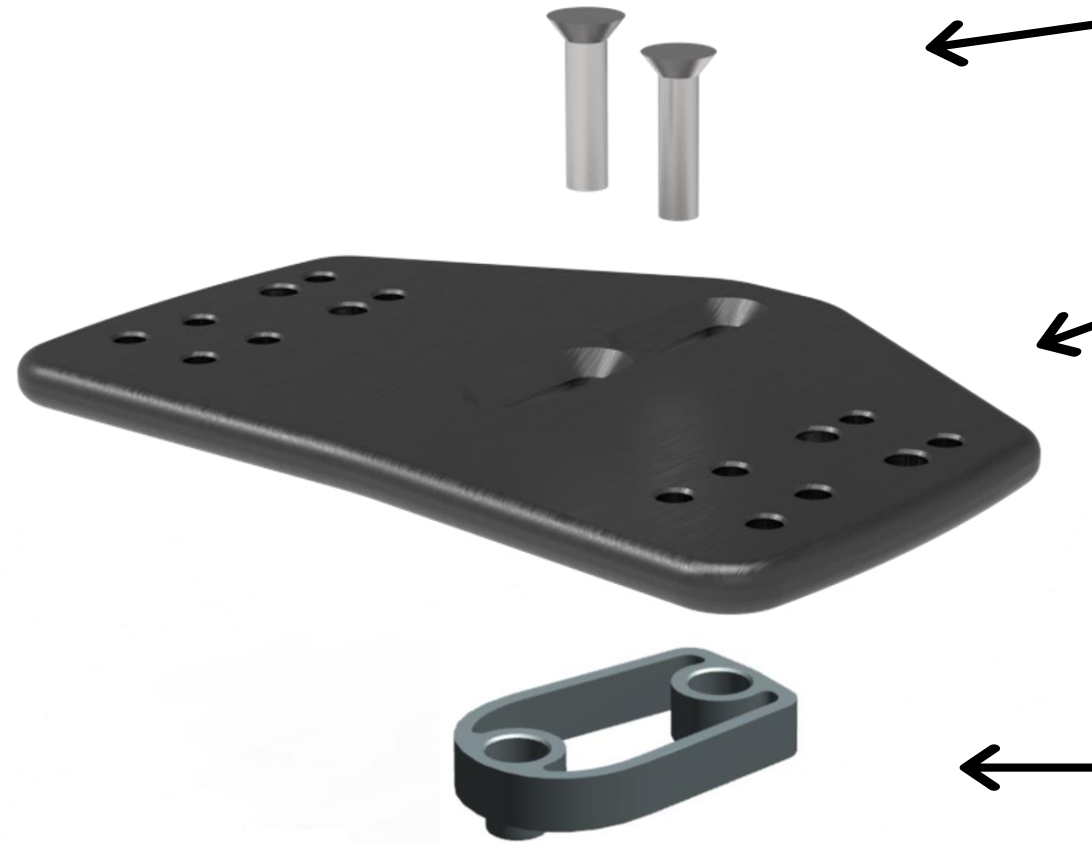




Factor Slick Plate Kit



M6 25mm Countersunk bolt *Supplied

D2Z Mono podium conversion plate
*Supplied. D2Z angled shims, pole clamps and poles mount on the plate.

Factor Slick Spacer
*Selection supplied with bike

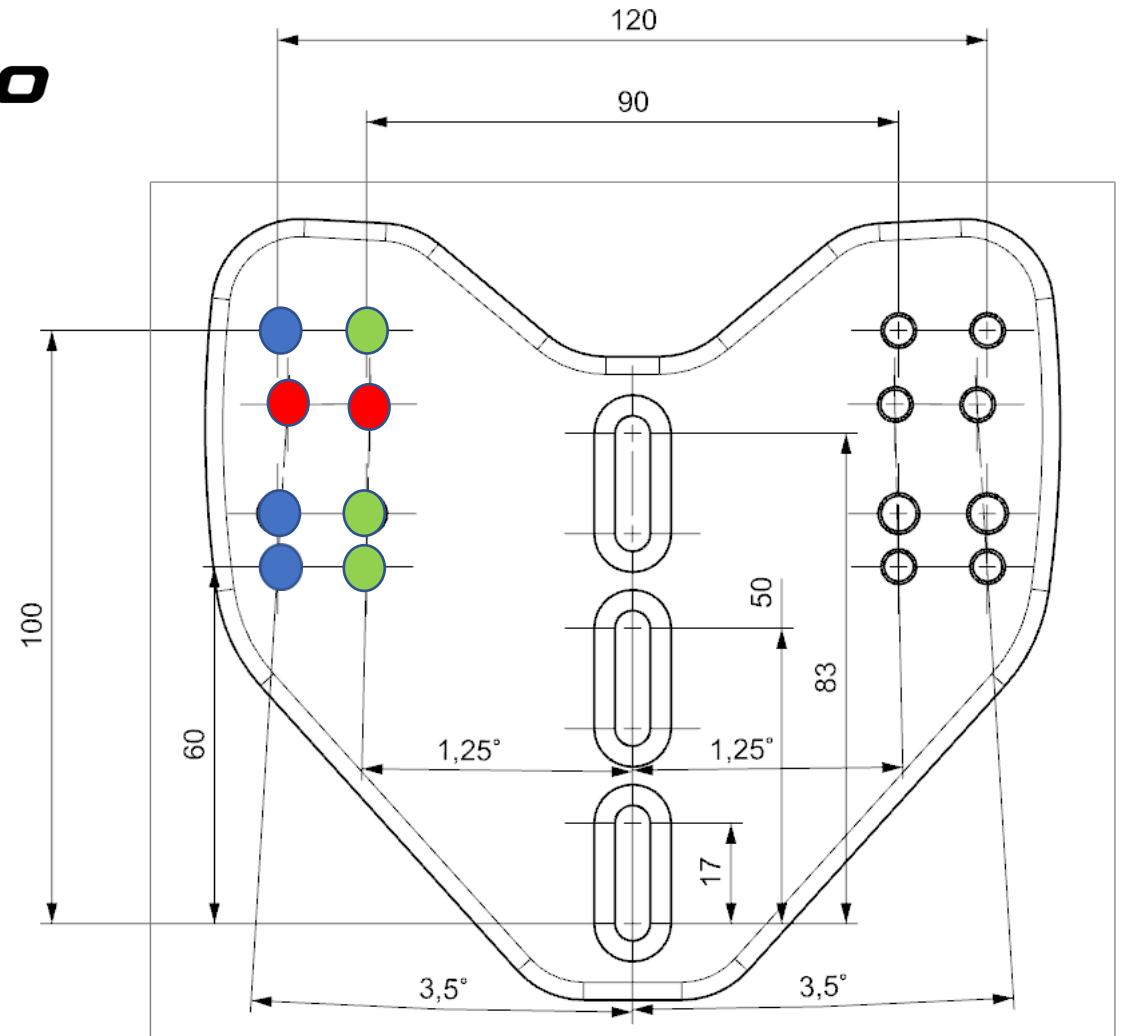
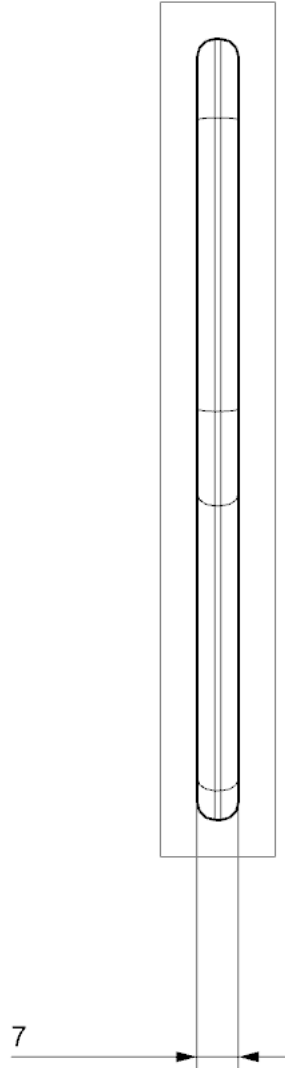
*Bar where plate attaches to needs to be made flat—dremmel off risen areas.
Small holes to be drilled in connector blocks for cables.



Mono Plate

for use on Cervelo P series,
 Scott Plasma 6, Trek Speed
 Concept pre 2022, Orbea
 Ordu, Factor Slick, Canyon CF
 SLX/CFR from 2022

- 2 x M6 countersunk bolts supplied to attach plate to riser/bar in central slots
- 4 x M6 x 10mm bolts supplied to attach angled shims to plates (longer bolts required if using spacers)
- D2Z pole clamps offset pole width by 15mm each. Poles can be set to widths of 60, 90, 120 or 150mm
- **Red** holes – for cables
- **Blue** holes – outer shim attachment. Straight or 7 deg.
- **Green** holes – inner shim attachment. Straight or 2.5 deg.





Factor Slick fitted with Drag2Zero USP System

Ergo Armrests with BTA mount

Pole Clamps & Farings



Mono Plate

15 degree angled shims

76 Projects
Computer mount

HI Rise
Pole/straight grip

