



DRAG2ZERO

D2Z Mono Plate *Supplied

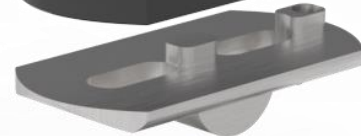
TREK SPEED CONCEPT PRE 2022 MONO PLATE ADAPTER



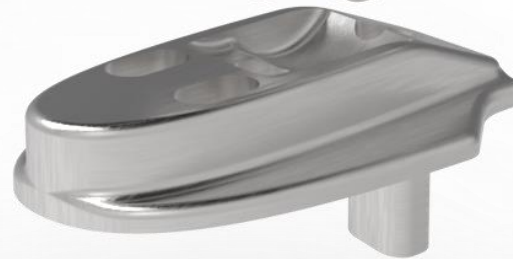
M6 25mm
Countersunk bolts
*Supplied



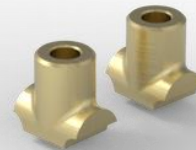
D2Z TSC Spacer
*Supplied



Trek Tilt Adjuster
(Supplied with bike)



Trek Riser
(Selection supplied
with bike)



Trek M6 Anchor Bolts
(Not supplied – older models
use M5 bolts. These should
be replaced with M6 bolts.)



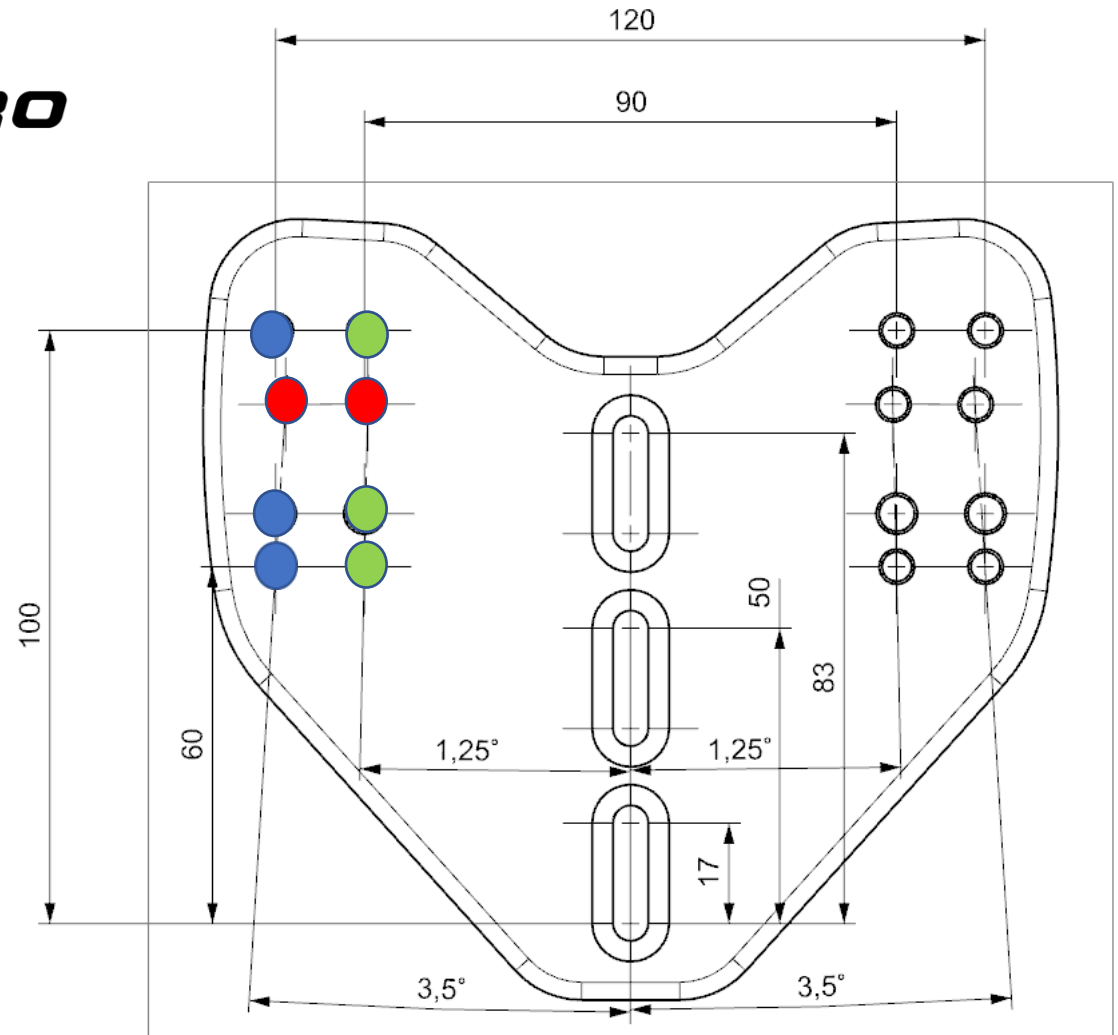
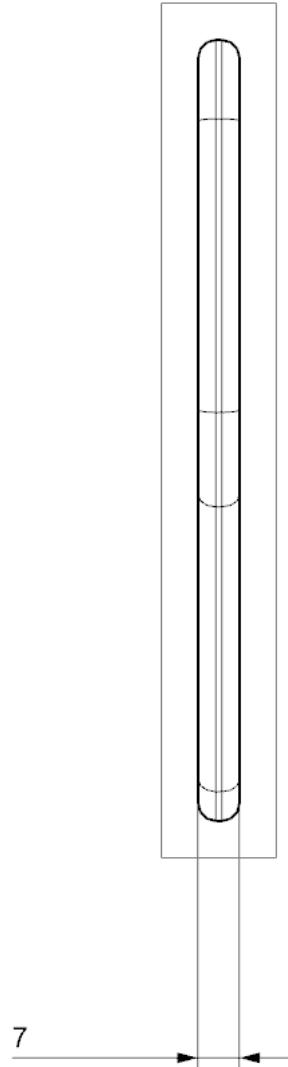
Mono Plate

for use on Cervelo P series,
Scott Plasma 6, Trek Speed
Concept pre 2022, Orbea
Ordu, Factor Slick, Canyon CF
SLX/CFR from 2022

- 2 x M6 countersunk bolts supplied to attach plate to riser/bar in central slots
- 4 x M6 x 10mm bolts supplied to attach angled shims to plates (longer bolts required if using spacers)
- D2Z pole clamps offset pole width by 15mm each. Poles can be set to widths of 60, 90, 120 or 150mm
- **Red** holes – for cables
- **Blue** holes – outer shim attachment. Straight or 7 deg.
- **Green** holes – inner shim attachment. Straight or 2.5 deg.



DRAG2ZERO



**TREK SPEED CONCEPT WITH D2Z USP
SYSTEM**

Hi Rise
Pole/straight
grip

Ergo Arm rest -

Pole clamp with
fairing

15 deg angled shim
(10, 12.5, 15, 17.5
and 20 available)

Trek Mono adapter
plate



D2Z
DRAG2ZERO®

