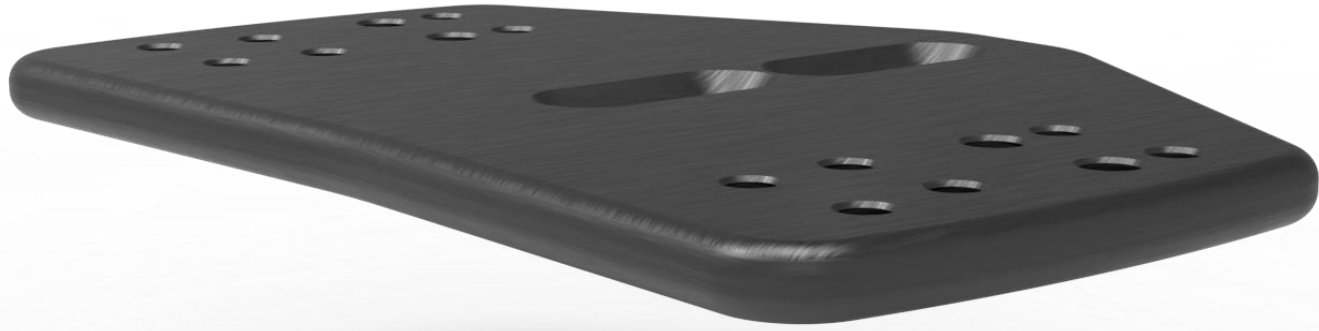




Canyon CF SLX/CFR Post 2022 Mono Plate Kit



2 X M6 25mm
Countersunk bolt
*Supplied



D2Z Mono
Plate *Supplied



DRAG2ZERO

Mono Plate

for use on Cervelo P series,
Scott Plasma 6, Trek Speed
Concept pre 2022, Orbea
Ordu, Factor Slick, Canyon CF
SLX/CFR from 2022

- 2 x M6 countersunk bolts supplied to attach plate to riser/bar in central slots
- 4 x M6 x 10mm bolts supplied to attach angled shims to plates (longer bolts required if using spacers)
- D2Z pole clamps offset pole width by 15mm each. Poles can be set to widths of 60, 90, 120 or 150mm
- **Red** holes – for cables
- **Blue** holes – outer shim attachment. Straight or 7 deg.
- **Green** holes – inner shim attachment. Straight or 2.5 deg.

