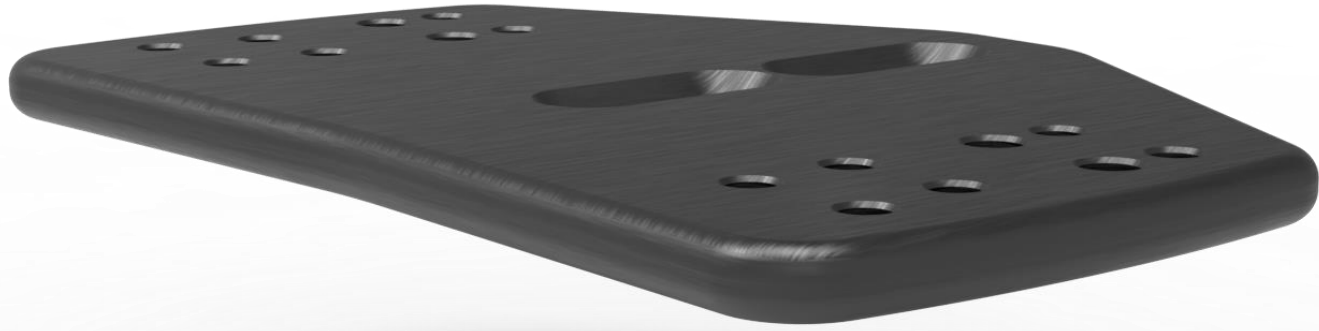




# Orbea Ordu Mono Plate Kit



Bolts for attachment of plate to bar supplied with bike



D2Z Mono Plate \*Supplied



**DRAG2ZERO**

## Mono Plate

for use on Cervelo P series,  
Scott Plasma 6, Trek Speed  
Concept pre 2022, Orbea  
Ordu, Factor Slick, Canyon CF  
SLX/CFR from 2022

- 2 x M6 countersunk bolts supplied to attach plate to riser/bar in central slots
- 4 x M6 x 10mm bolts supplied to attach angled shims to plates (longer bolts required if using spacers)
- D2Z pole clamps offset pole width by 15mm each. Poles can be set to widths of 60, 90, 120 or 150mm
- **Red** holes – for cables
- **Blue** holes – outer shim attachment. Straight or 7 deg.
- **Green** holes – inner shim attachment. Straight or 2.5 deg.

