

D2Z

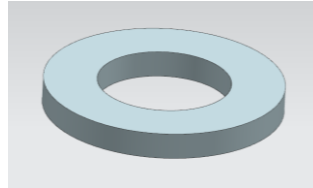
DRAGZERO®

BTA Bottle mount assembly instructions – Standard arm rests

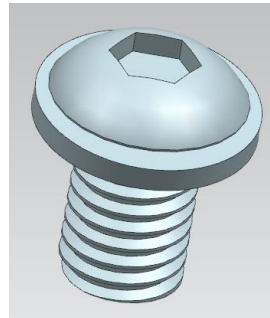


Parts list

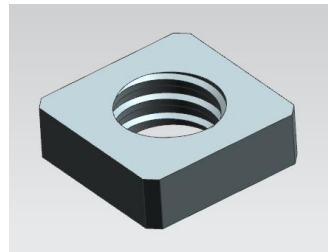
M5 Flat Washers
(x2)



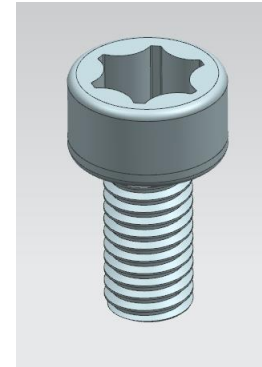
M5 10mm Flanged
Button screws (x4)



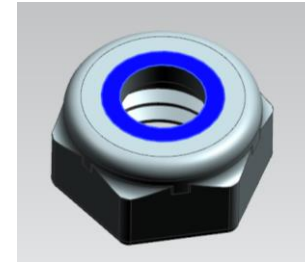
M5 Square nuts
(x4)
*Already installed into the
bottle mount



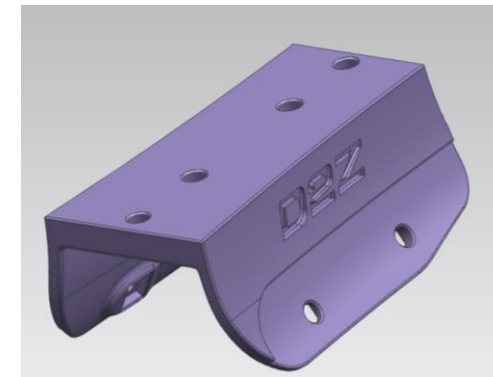
M5 12mm Caphead
screws (x2)



M5 Nylock nuts (x4)
*Already installed into the
bottle
mount

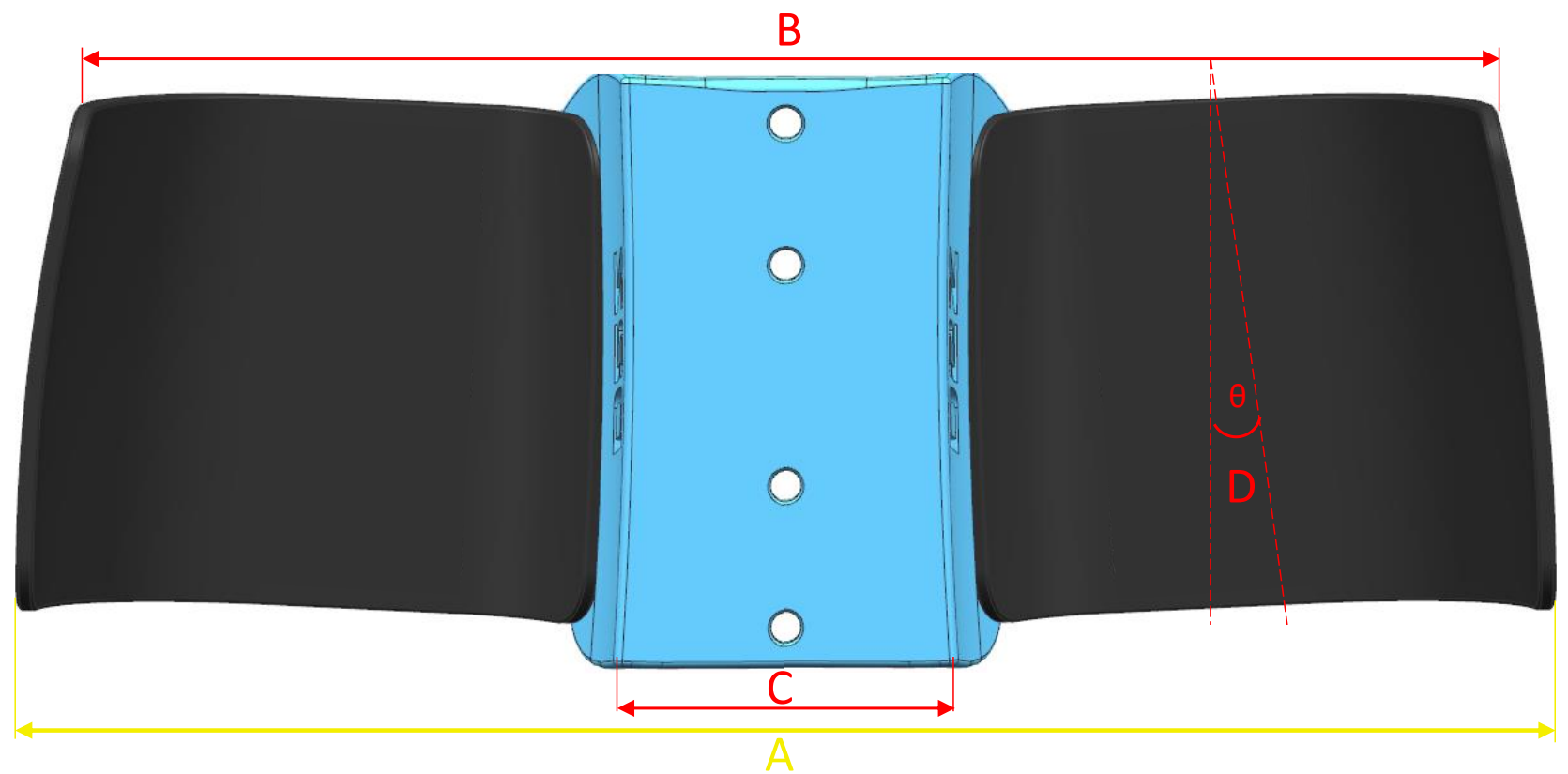


D2Z BTA Bottle mount
(x1)



Measurements

Bottle mount flex allows for approximately $\pm 5\text{mm}$ of tolerance for outer pad widths (A and B)



Part Name	Dimension A (outside to outside armrest width)	Dimension B (Front width for reference)	Dimension C (width of BTA mount for reference)	θ D ($^{\circ}$) between pad and mount
D2Z-BTA-0001	230mm	216mm	20mm	0
D2Z-BTA-0003	240mm	224mm	30mm	0.75
D2Z-BTA-0005	250mm	232mm	40mm	1.5
D2Z-BTA-0007	260mm	240mm	50mm	2.25
D2Z-BTA-0009	270mm	248mm	60mm	3
D2Z-BTA-0011	280mm	256mm	70mm	3.75

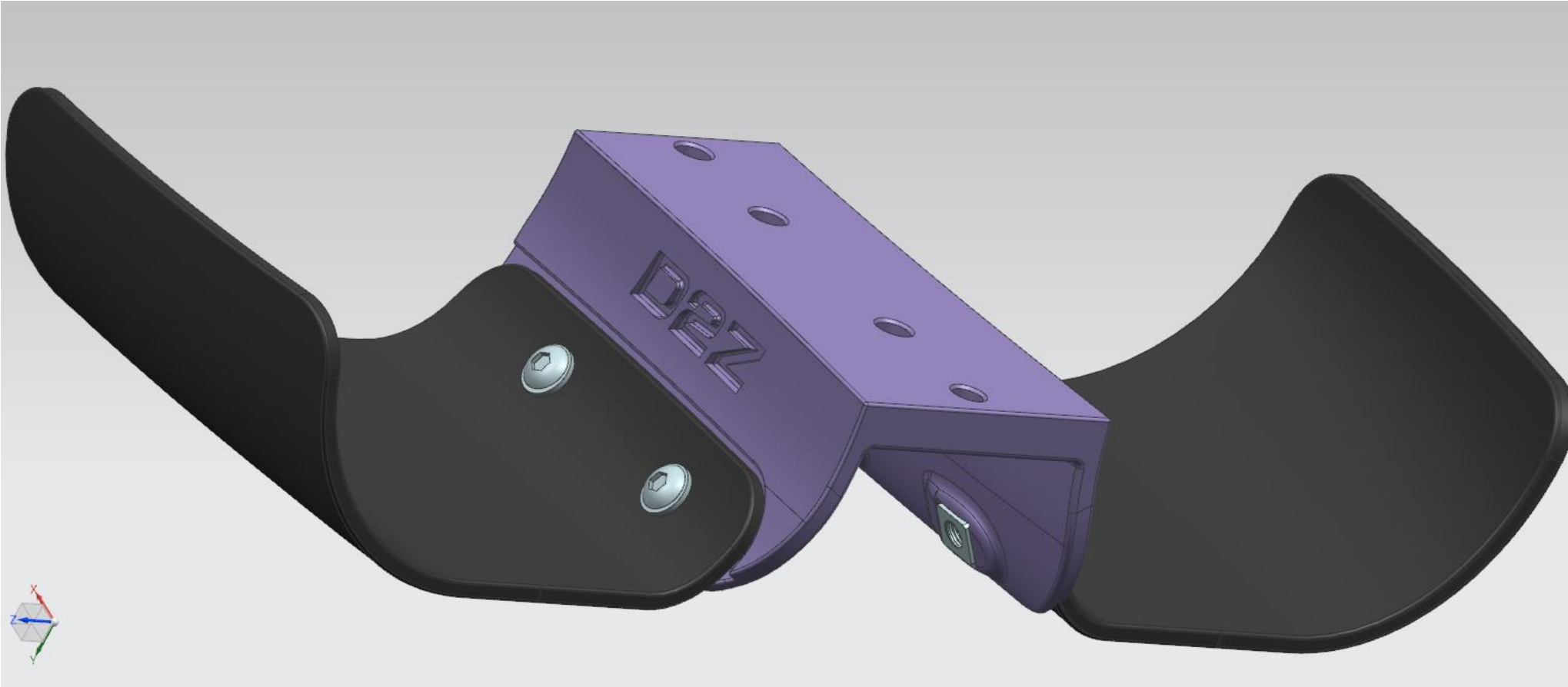
Step 1: Drill holes in the relevant positions on armrest (6mm drill bit)

To align the holes perfectly, place armrest in the desired position on the bottle mount and mark holes as seen below

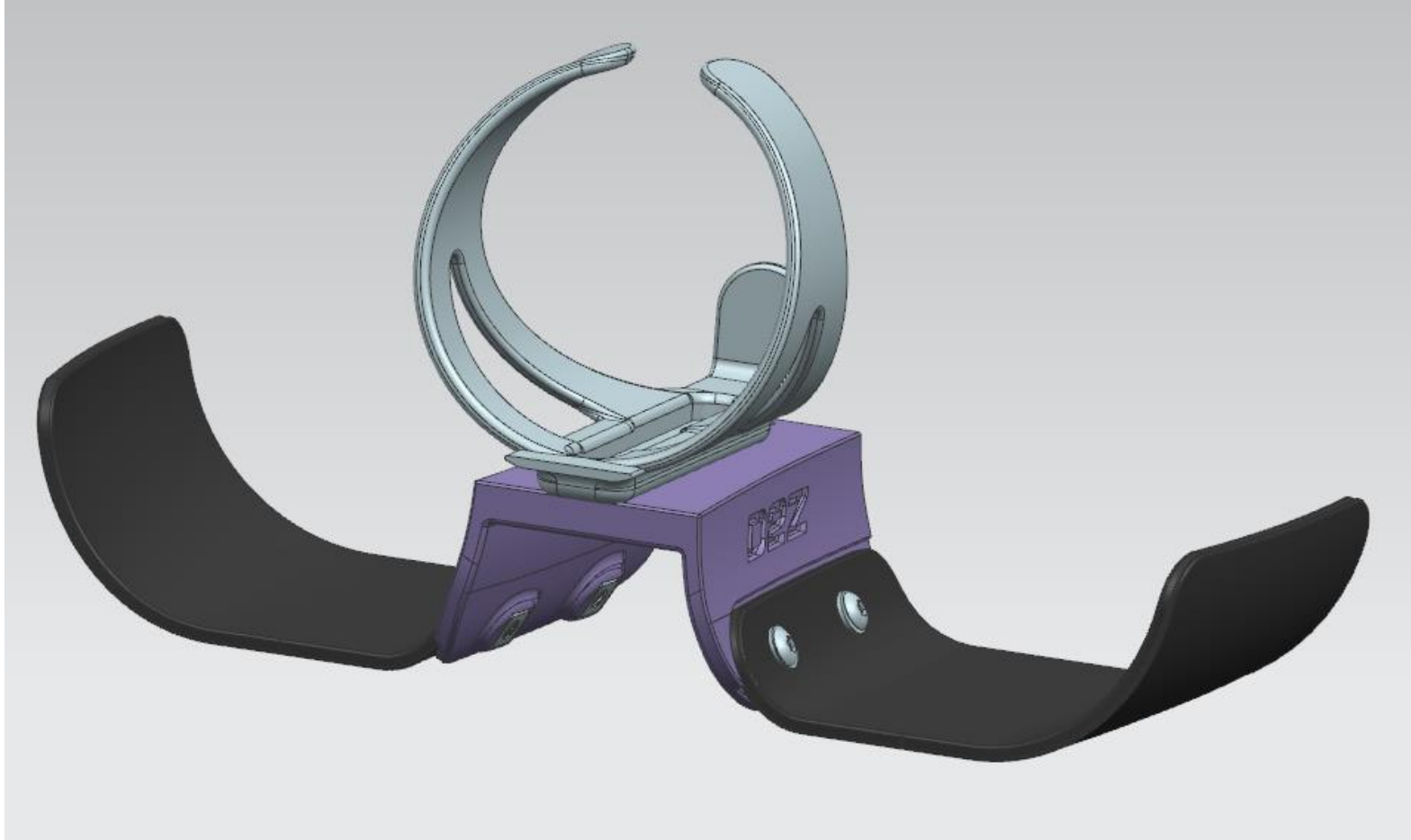
We suggest that you take off the armrests from the cockpit if they are already installed in order to drill accurately



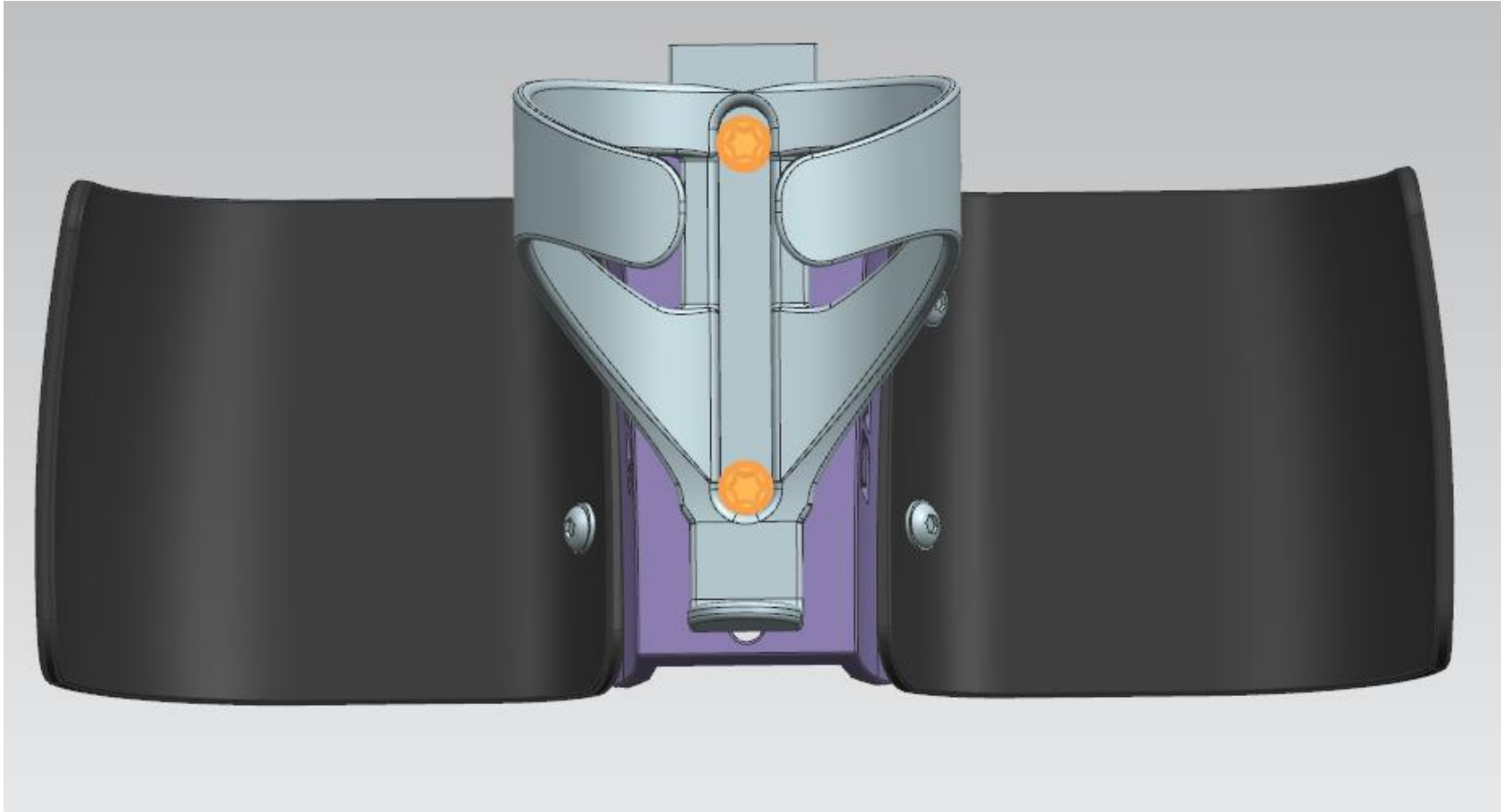
Step 2: Insert M5 flanged screws into armrests



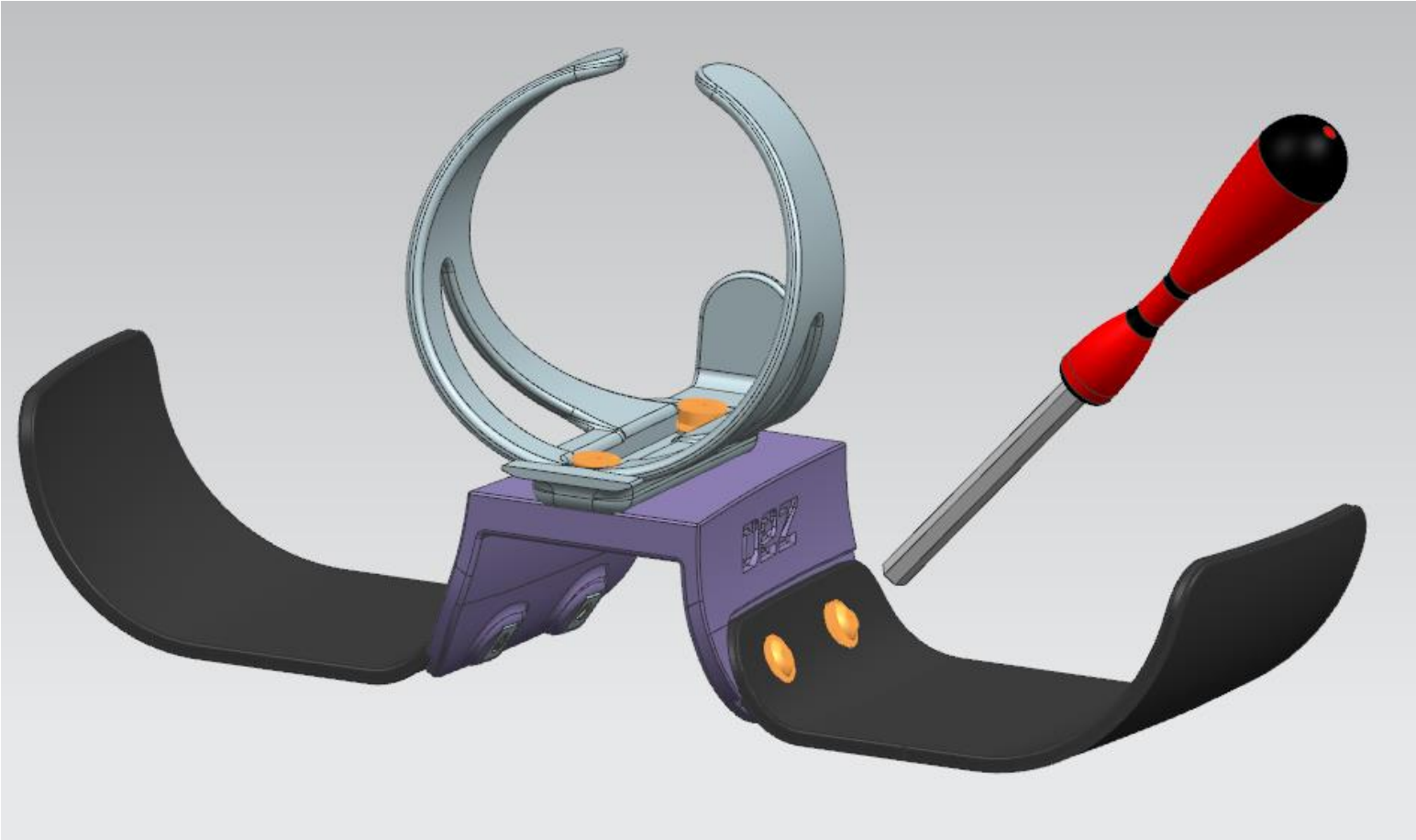
Step 3: Place bottle cage on top by aligning the holes of the cage with the holes in the mount



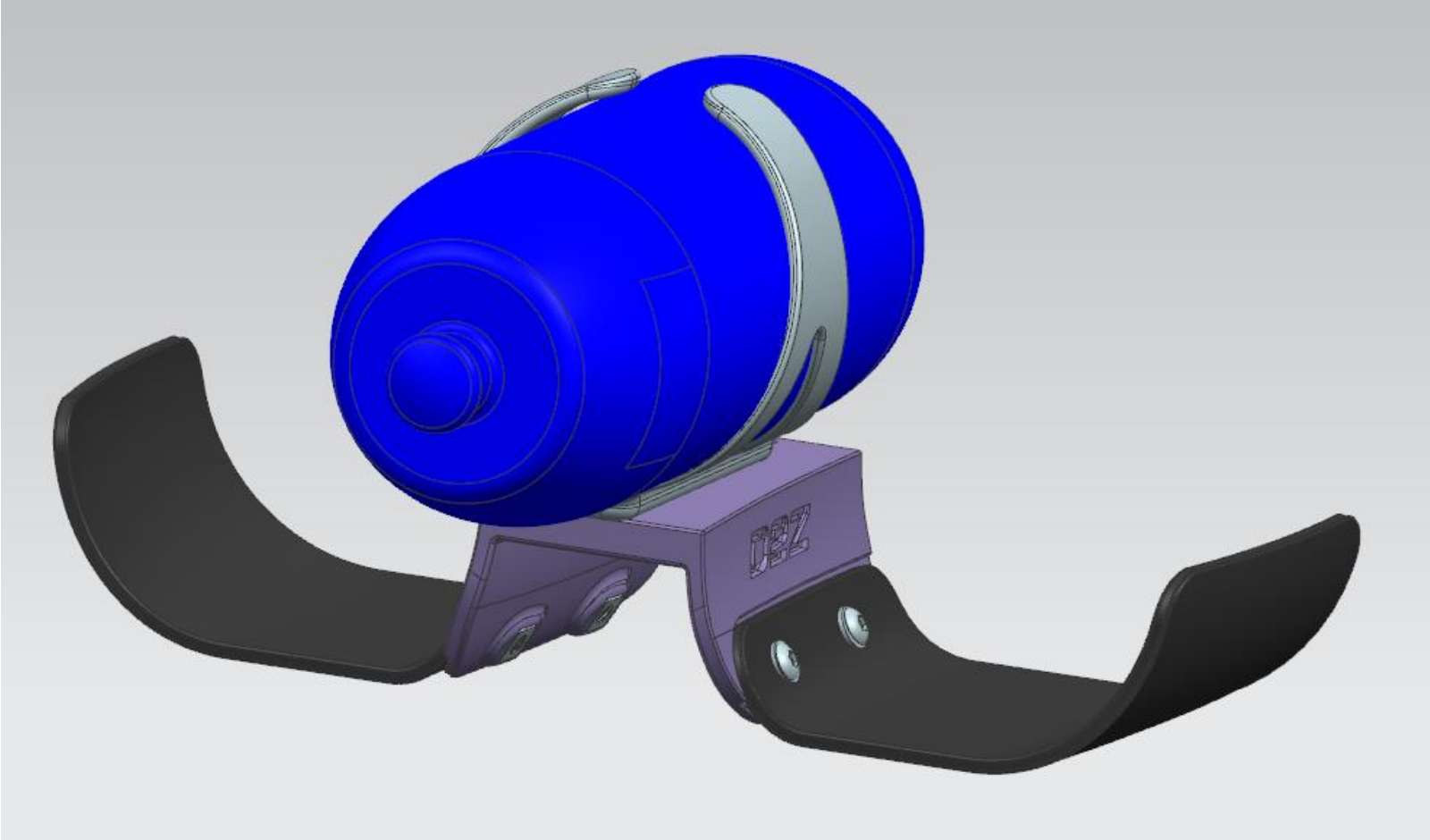
Step 4: Place washers and M5 16mm Caphead screws into the top holes to secure cage



Step 5: Tighten all screws



Step 6: Insert bottle





Drag2Zero Limited
Silverstone Sports Engineering Hub
Unit 1129 Silverstone Park, Buckingham Road
Silverstone, Northamptonshire, NN12 8FU, UK

Follow us on Twitter, Facebook, Instagram @drag2zero
Tel: +44 (0)1295 236117
Email: info@drag2zero.com

© Drag2Zero Limited 2020