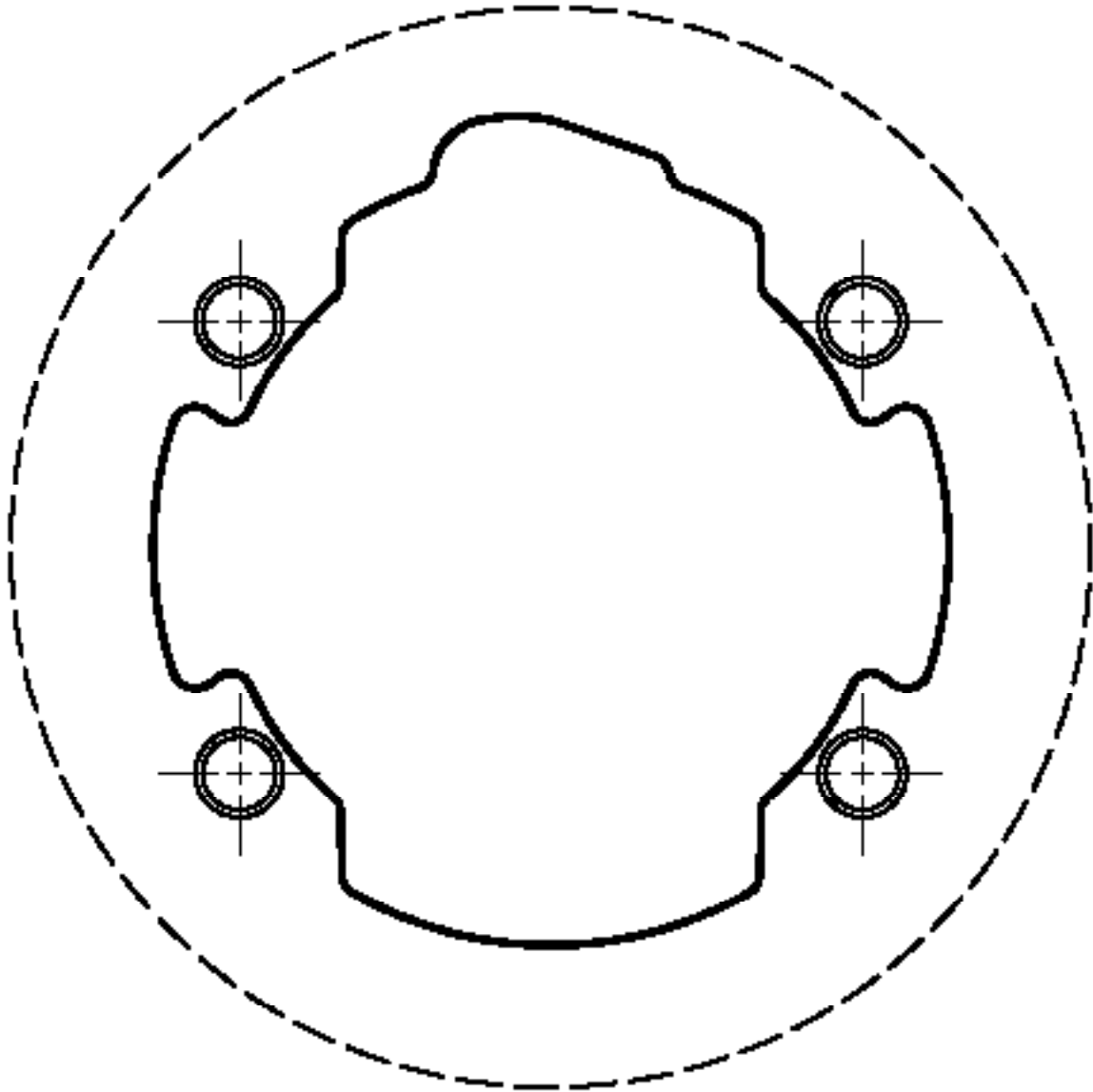




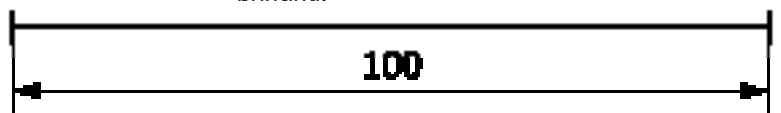
4 Bolt 107 BCD SRAM AXS

For the best results, cut out boarder, stick to piece of card (e.g 4mm) and place on crank itself



Make sure after printing that this is 100mm for correct scale:

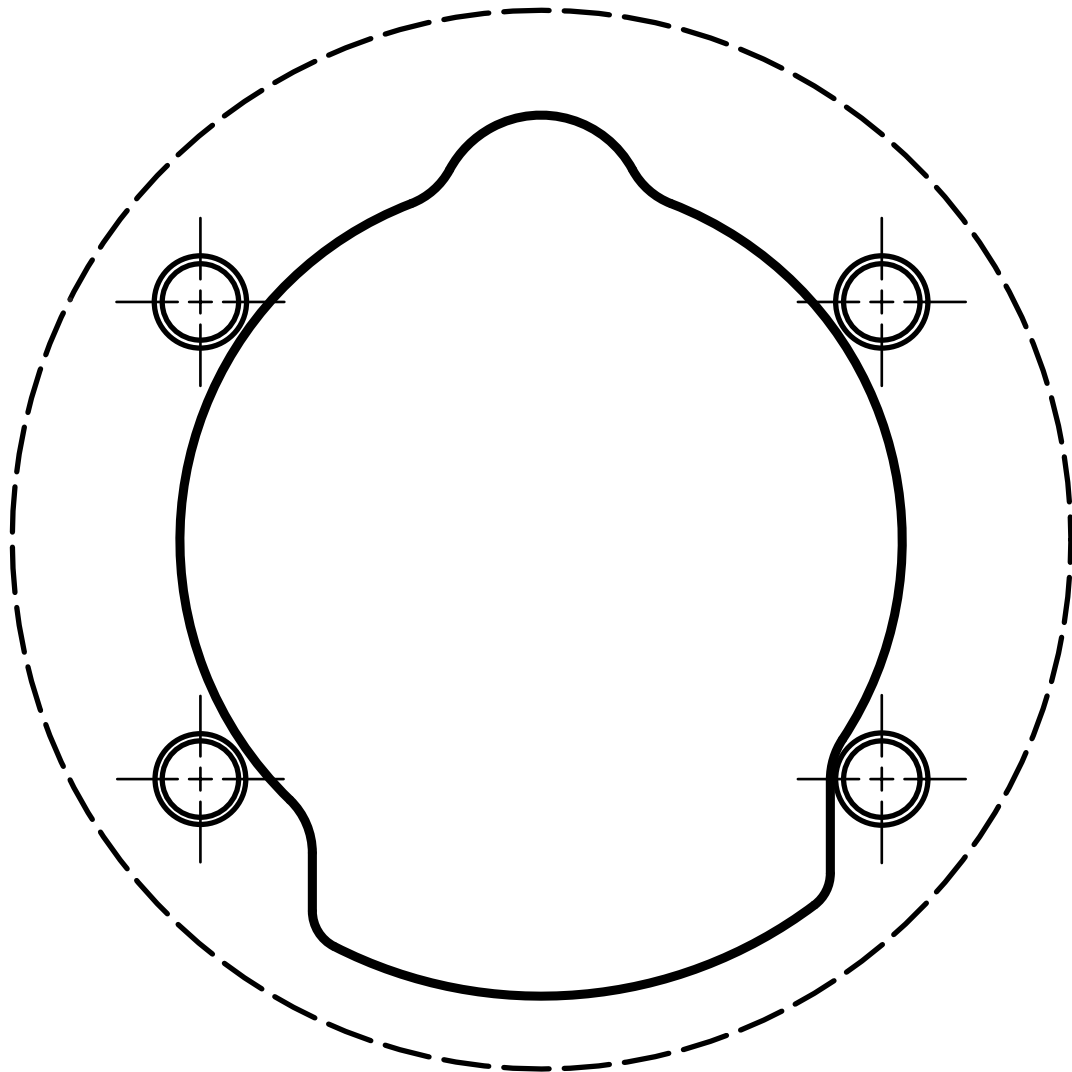
If not, check print settings for full page printing.





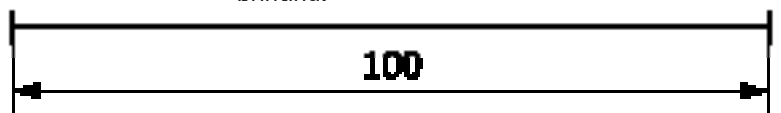
4 Bolt 110 BCD

For the best results, cut out boarder, stick to piece of card (e.g 4mm) and place on crank itself



Make sure after printing that this is 100mm for correct scale:

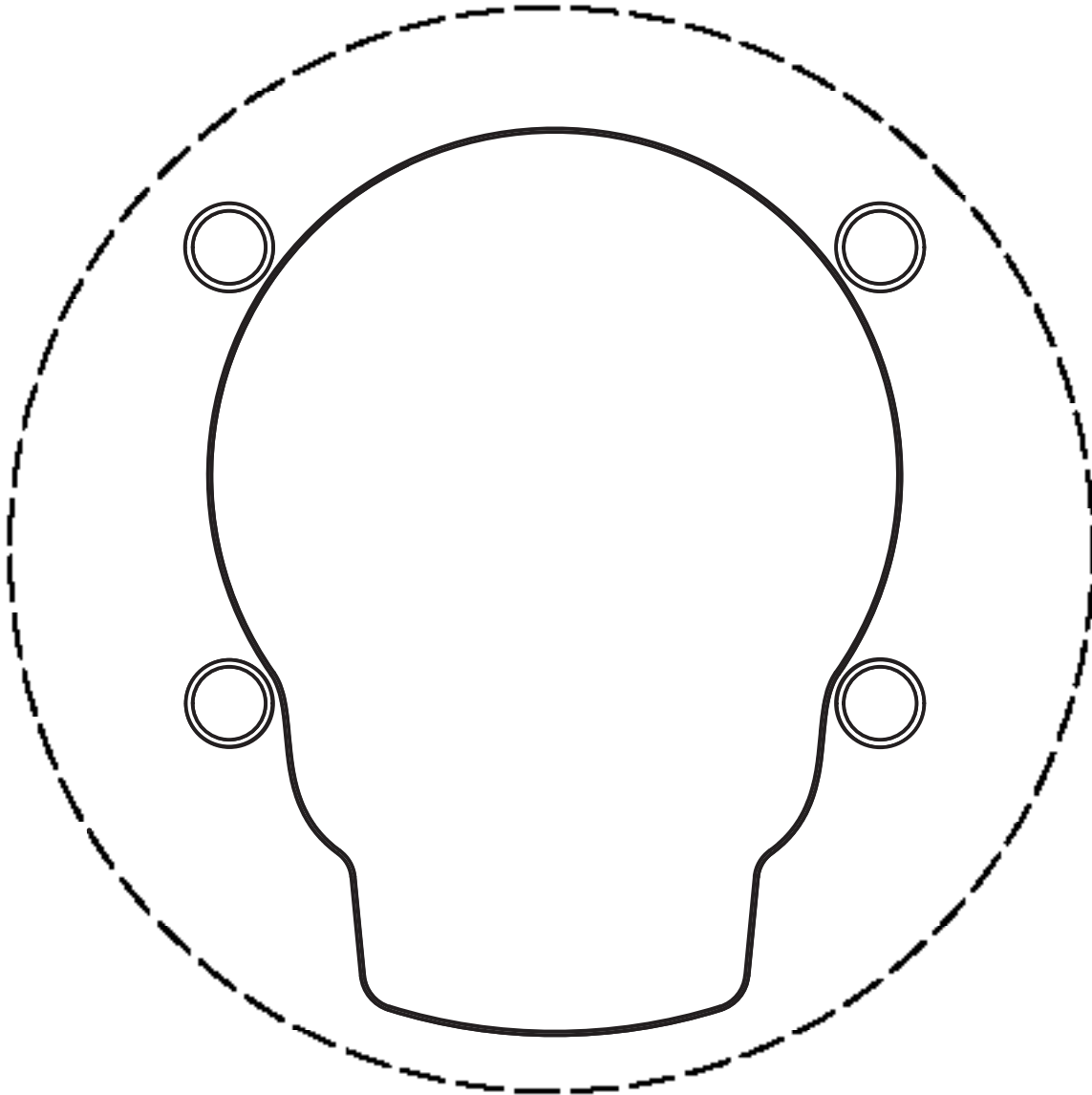
If not, check print settings for full page printing.





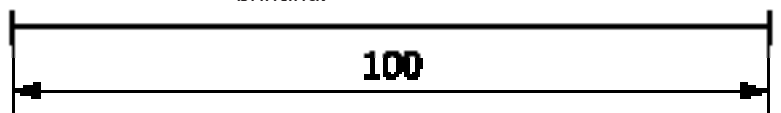
4 Bolt 110 BCD 9200

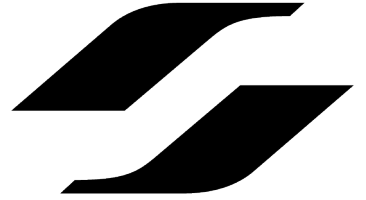
For the best results, cut out boarder, stick to piece of card (e.g 4mm) and place on crank itself



Make sure after printing that this is 100mm for correct scale:

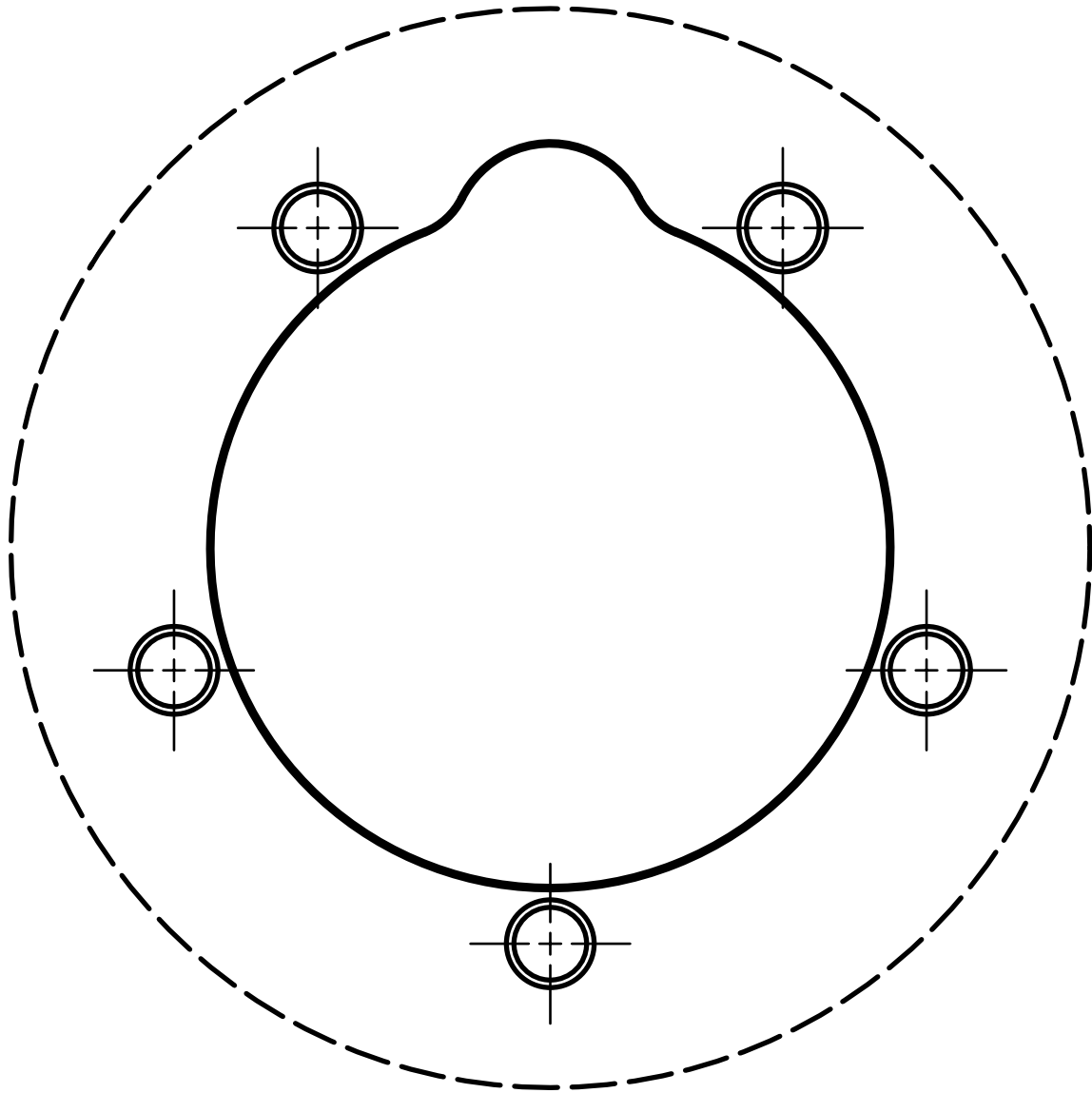
If not, check print settings for full page printing.





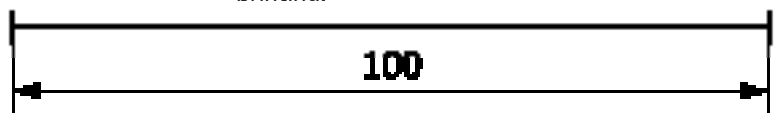
5 Bolt 110 BCD

For the best results, cut out boarder, stick to piece of card (e.g 4mm) and place on crank itself



Make sure after printing that this is 100mm for correct scale:

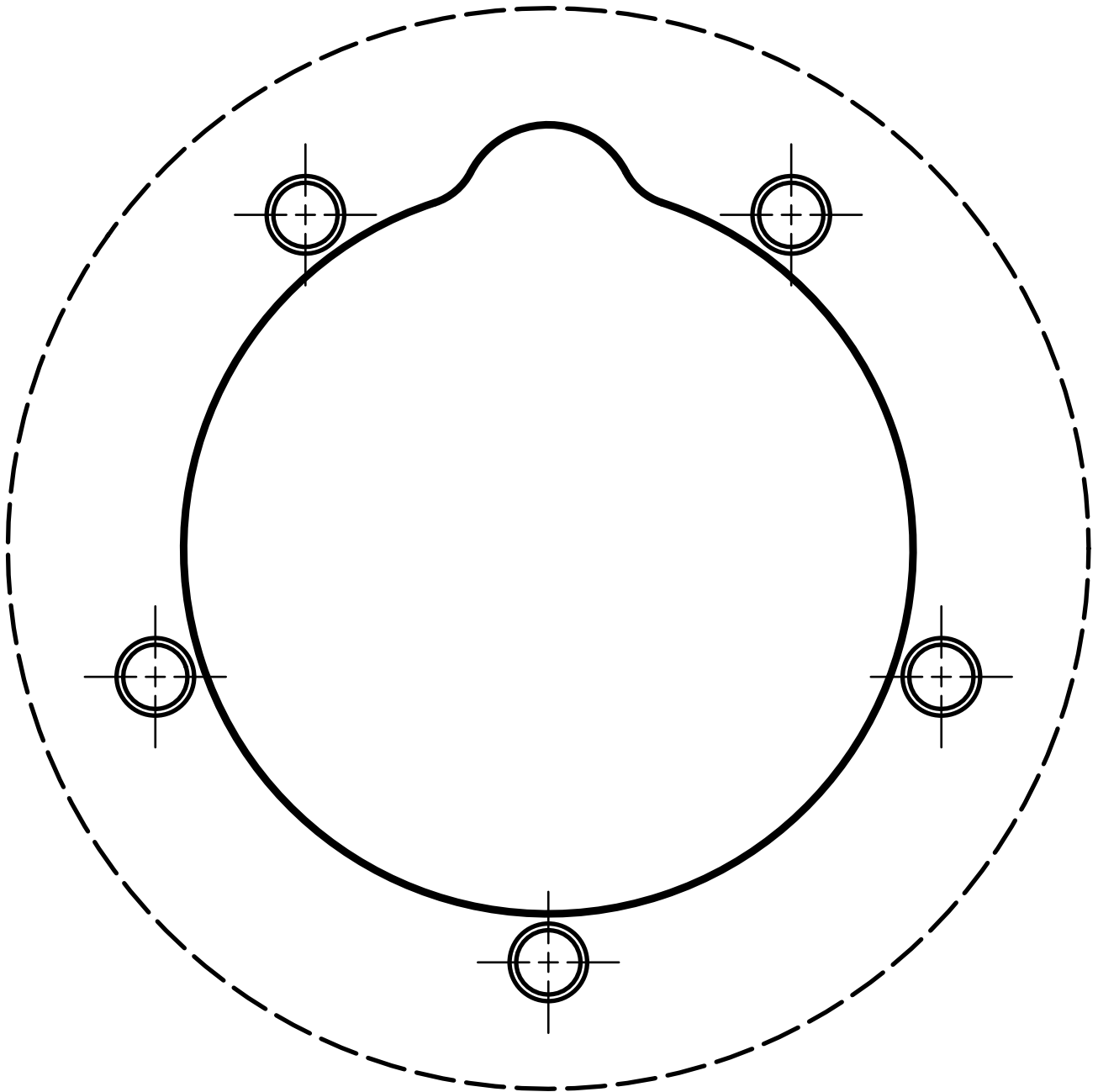
If not, check print settings for full page printing.





5 Bolt 130 BCD

For the best results, cut out boarder, stick to piece of card (e.g 4mm) and place on crank itself



Make sure after printing that this is 100mm for correct scale:
If not, check print settings for full page printing.

