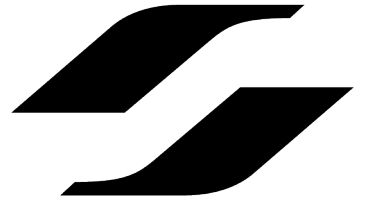


DRAG2ZERO

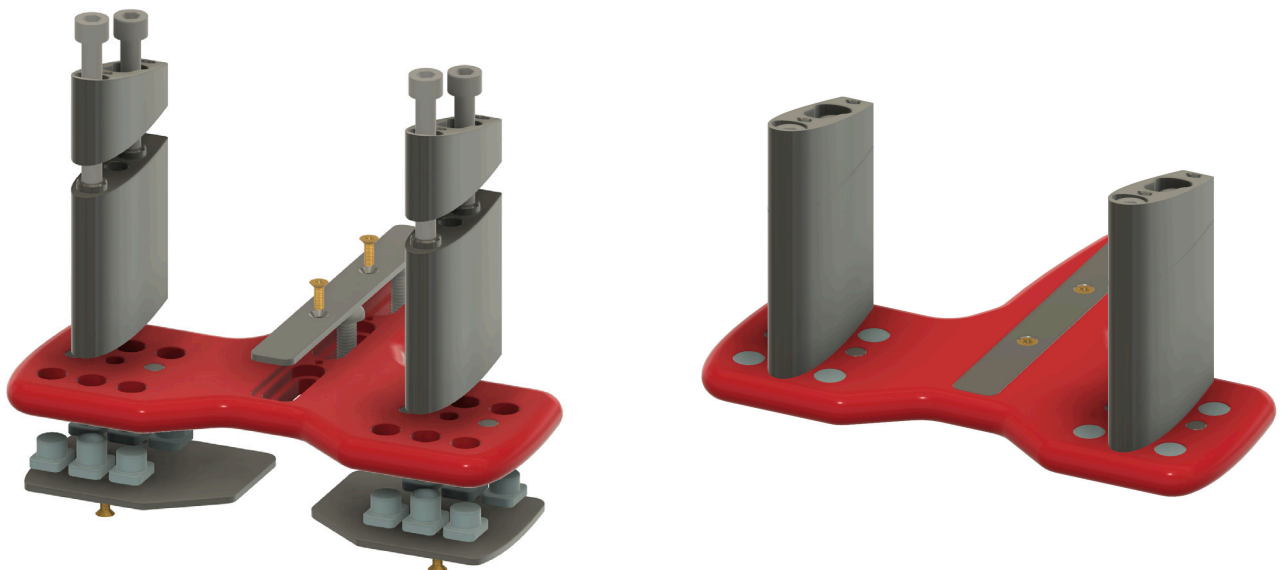
Gen2 Mono Plate

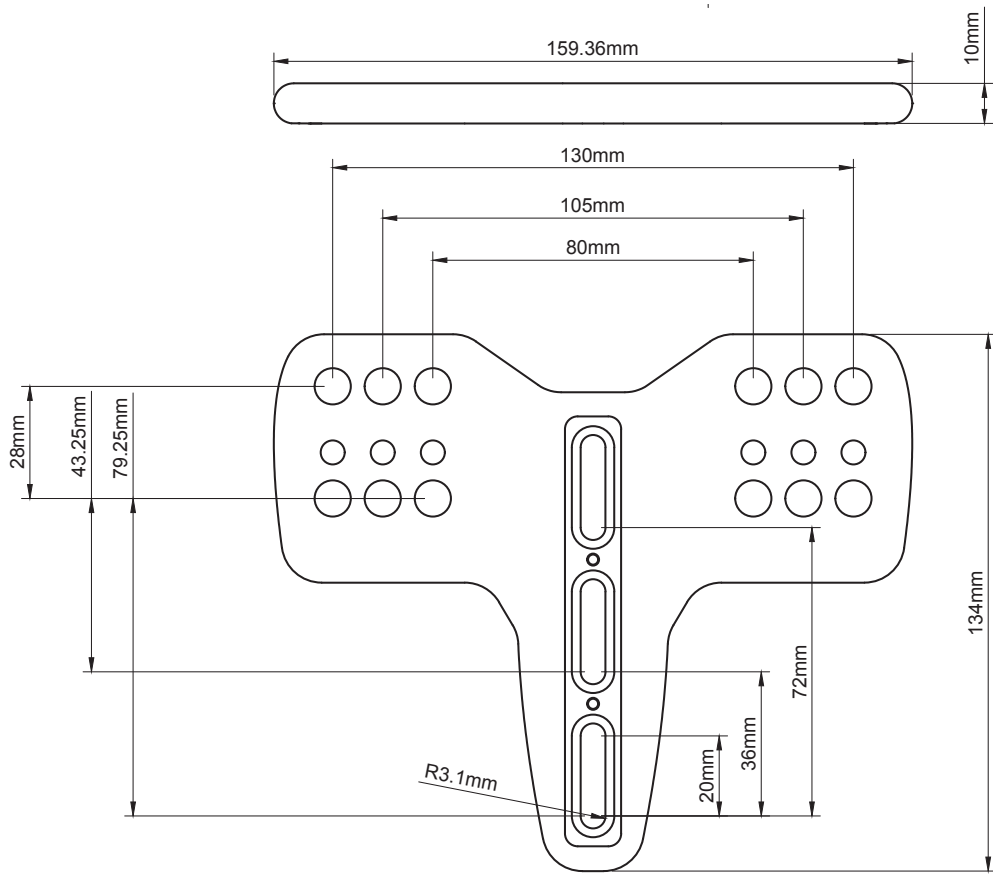


- £104.17 exc VAT
- UCI Compliant
- Clean aesthetic covering mounting bolts and electronic groupset cables
- 80mm, 105mm, 130mm podiumwidth options
- Gen2 riser and angled shims compatible

- Supplied with
 - 1 x Mono Plate
 - 2 x M6 Button head bolts (bike specific)
 - 2 x Angled shims
 - 4 x Angled shim mounting bolts
 - 2 x Pole Clamps

- Bike Specific Info
 - Scott Plasma 6 - 246g (Supplied with 20mm bolts)
 - Cervelo P5 - 304g (Specific Solution, additional £58.33 ex VAT)
 - Orbea Ordu - 246g (Supplied with 22mm bolts)
 - Trek Pre 2021- (Specific Solution, additional +£16.67 ex VAT)
 - Canyon 2021 - 246g (Supplied with 22mm bolts)
 - Factor Slick - 246g (Supplied with 22mm bolts)







Cable Routing

- If your groupset has di2 or Sram electronic cables. You will need to file a small hole into the carbon covers. This will allow you to pass your electronic cables through the panels and into your bike. The location of these are userdefined as every bike has a different cabling solution.
- Some bikes have cable routing down through the mono post. If so you will also need to file or drill a cable hole through the top carbon panel as seen below.

If you require any help when assembling your system and cabling routing, please email us at info@drag2zero.com



Top Panel Routing

- User defined depending on individual cabling situation, bike cabling and plate position.
- Some bike will not require this such as the P5. Please let us know if you have any questions.



Under Panel Routing

- User defined depending on individual cabling situation, bike cabling and plate position.